

Foundation Subjects Activities:

Science: As a follow up to our topic on Teeth and Digestion try these activities on Purple Mash:



2do: Human Teeth

Label the types of teeth and the anatomy of a tooth. Then answer the questions on Human Teeth.

(Assigned to everyone in class: Year 4. Set by: Victoria James)

Edit

Close

View Folder



2do: Digestive System

Label the parts of the human digestive system.

(Assigned to everyone in class: Year 4. Set by: Victoria James)

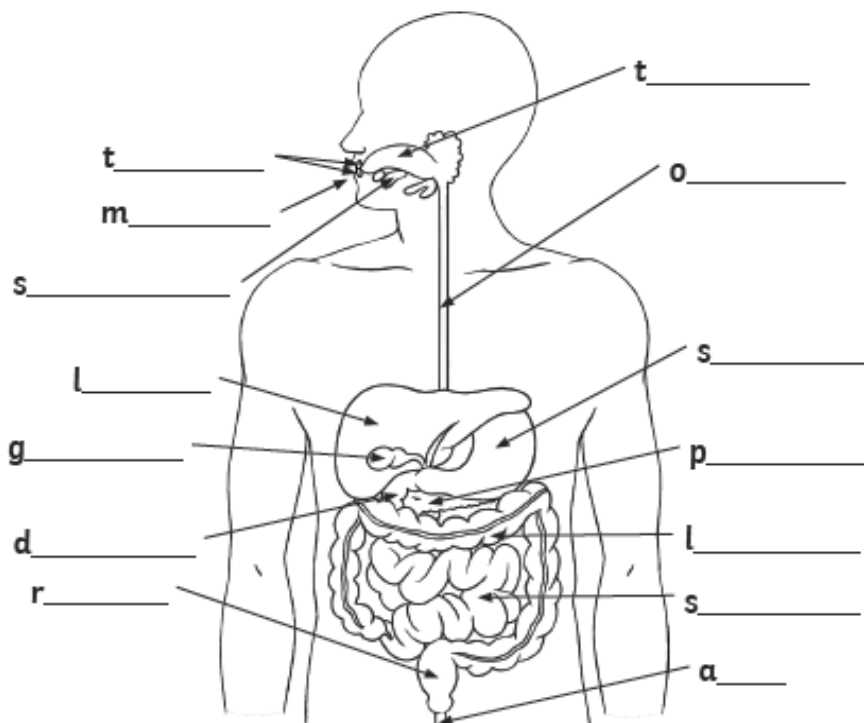
Edit

Close

View Folder

Now try these activities:

1. Label the diagram below with the different parts of the digestive system. Use the word bank below to help you.



large intestine	gallbladder	stomach	tongue
teeth	rectum	duodenum	salivary gland
pancreas	anus	mouth	
liver	oesophagus	small intestine	

2. Draw lines to match the body part and a description of its function.

stomach	uses chemicals to change food into substances that the body can use and gets rid of things that are toxic.
small intestine	a tube that moves food from the mouth to the stomach
oesophagus	stools are stored here before leaving the body through the anus
liver	food is broken down with acid here
rectum	water is absorbed from remaining waste food and stools are formed
large intestine	where nutrients are absorbed into the body

3. Label the diagram below with the following:

incisor premolar canine molar

The diagram shows a human mouth with teeth. There are four empty rectangular boxes for labeling. One box is on the left, connected to the front teeth. Three boxes are on the right, connected to the side teeth. Lines connect the boxes to the corresponding teeth: the left box to the front teeth, the top-right box to the upper side teeth, the middle-right box to the lower side teeth, and the bottom-right box to the lower front teeth.

4. Write true or false next to each statement.

Molars are used to bite and cut food.	
Canines tear and rip food in the mouth.	
Wisdom teeth have no function.	
Premolars are used to hold and crush food.	

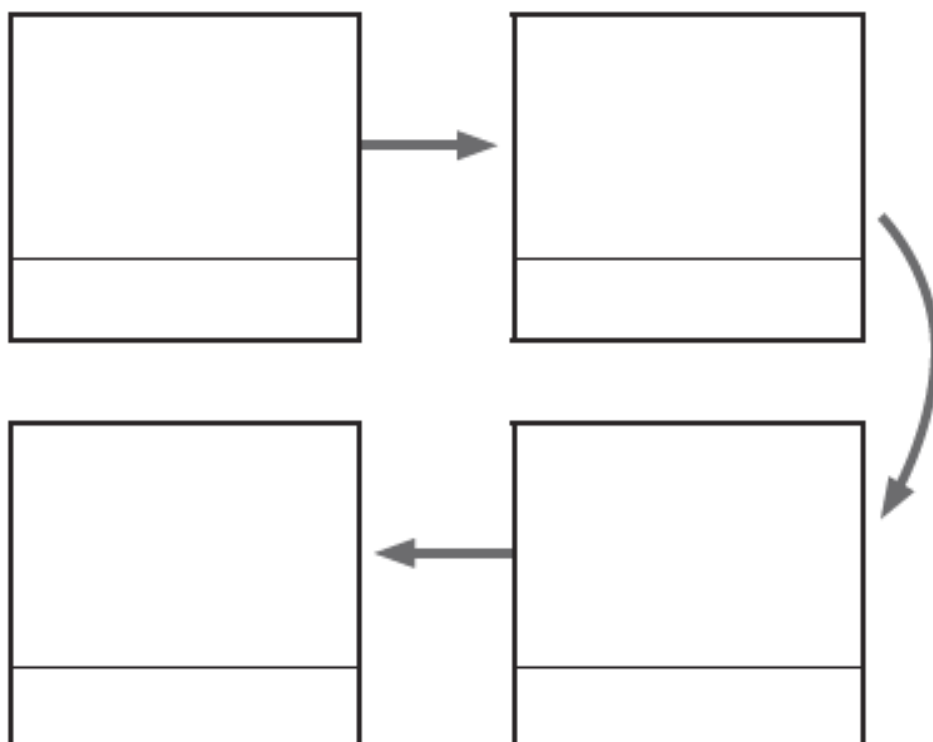
5. Fill in the missing words in the sentences below:

A herbivore is an animal that eats _____.

A _____ is an animal that feeds on other animals.

Omnivores are animals that eat _____
and _____.

6. In the diagram below, draw pictures with labels to show how the food chain works. Include the words predator, producer and prey in your diagram.



Geography: As a follow up to our topic on Asia, try these activities on Purple Mash:



2do: Japan Fact File

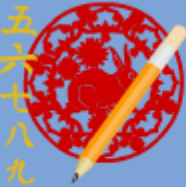
A template to help pupils create a fact file about Japan.

(Assigned to everyone in class: Year 4. Set by: Victoria James)

Edit

Close

View Folder



2do: Chinese Writing

Can you write numbers 1 to 10 in Chinese?

(Assigned to everyone in class: Year 4. Set by: Victoria James)

Edit

Close

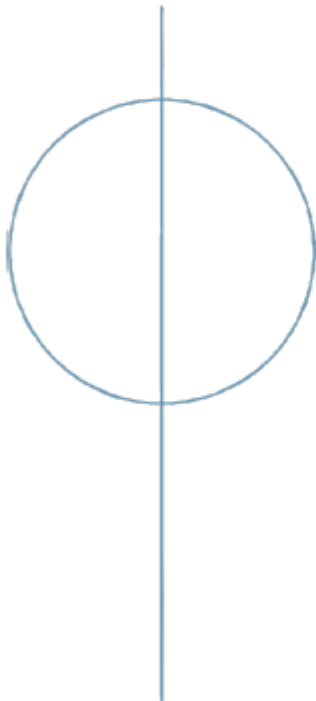
View Folder

Now try this activity:

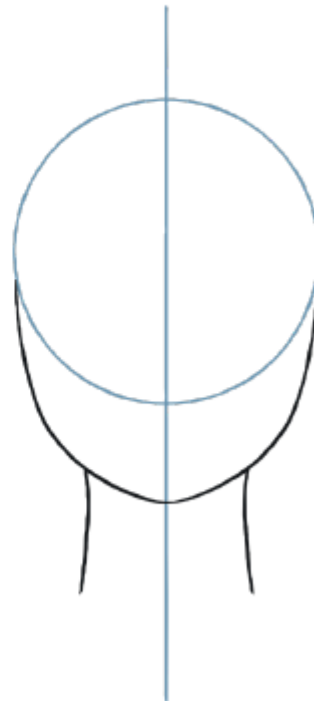
How to Draw a Manga Character

Draw a manga style character using the following illustrations to help you.

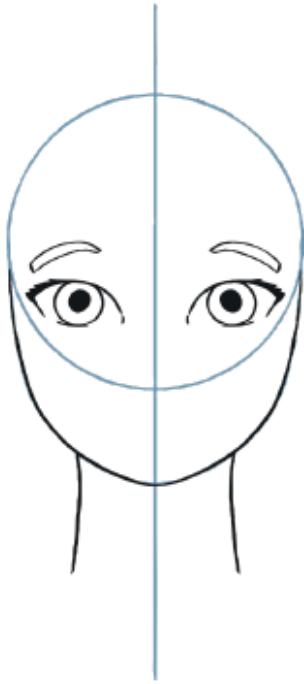
1.



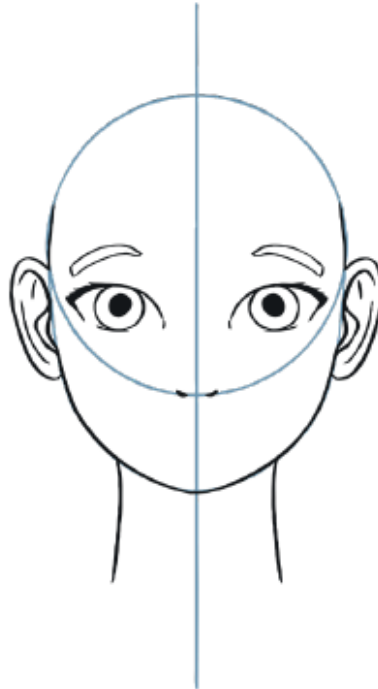
2.



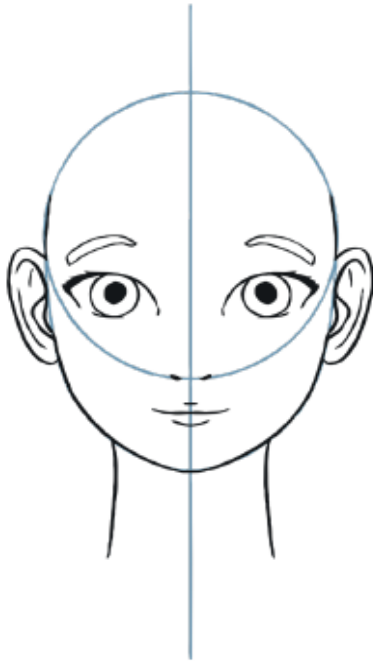
3.



4.



5.



6.



Top Tips

Decide if your character is male or female. For females, add eyelashes and colour to the lips.

Draw choppy, chin length hair for males and longer hair for females.

Add a simple line to depict the nose on male characters, with nostrils for the female.

Add a jagged eyebrow if your character is a villain.

Add extra details to show how your character is feeling: rosy cheeks and steam for anger, a wide smile and closed eyes for happiness, tears pouring down the face for sadness.

To depict negative emotions, keep the pupils small; large pupils depict positive emotions.

Add an unnatural colour, such as blue or purple to the hair.